



# RIYANSH INTERNATIONAL

EXTRACTION    REFINING    RECYCLING  
(A GOVERNMENT OF INDIA RECOGNIZED STAR EXPORT HOUSE)



**Manufacturer & Exporter of:**  
**Mechanical Oil Extraction Plant & Spare Parts**

## INDEX

[illegible]

"Our Clients are at the heart of everything We Do. Customer satisfaction is our ultimate goal. We measure our success by the success of our clients. Our commitment to quality is not just a promise, but a practice. We are not just building products; we are shaping the future of our clients. Our vision is to create solutions that stand the test of Time."

Our success as a leading manufacturing & export house, is a testament to our unwavering dedication, innovation, and hard work. The company has attained prominent global leadership in the field of Edible and non-edible oil extraction, oil & fats and allied industries.

We are serving our valued customers to their complete satisfaction by ensuring fair, transparent, accountable and ethical management in order to protect the interest of all stakeholders including employees, customers, vendors, regulators and society. We prioritize competence, competitiveness, and timely delivery while maintaining the highest quality standards.

As a responsible corporate citizen, we follow the laws on land in letter and spirit. We will continue to push boundaries, explore new markets, and set higher standards for ourselves.

Let's embrace the future with optimism, collaborate with passion, and strive for excellence. together, we will not only achieve our goals but surpass them, making our company a benchmark in the industry.

With open arms, we welcome you to "RIYANSH INTERNATIONAL."

- SHYAM DUBEY  
Chairman  
RIYANSH INTERNATIONAL



# Oil Mill For Self Employments

We Manufacture & Export Complete Edible & Non-edible Oil Extraction Plant on Turnkey Basis Worldwide for Various Oilseeds & Nuts such as:



**Soyabean / Soyabean**  
10-20%



**Groundnut / Peanut**  
40-45%



**Sunflower Seed**  
35-40%



**Cottonseed**  
17-20%



**Palm Kernal**  
45-50%



**Copra / Coconut**  
63-70%



**Mustard / Canola / Repesed**  
45-50%



**CSNL / Cashew Nut Shell**  
28-33%



**Sheanut Kernel**  
45-50%



**Sesame Seed**  
50-57%



**Castor Seed**  
45-50%



**Baobab Seed**  
25-33%



**VCO / Virgin Coconut**  
60-65%



**Corn Germ**  
35-40%



**Jatropha Seed**  
48-40%



**Niger Seed**  
32-50%



**Flax Seed**  
32-43%



**Safflower Seed**  
35-38%



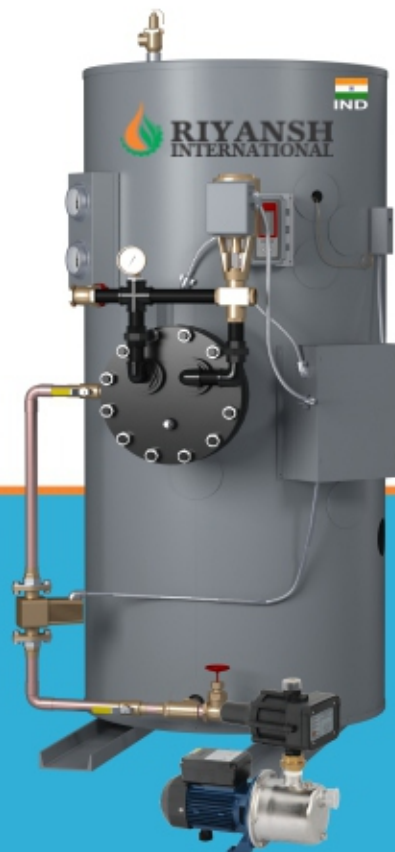
**Cocoa Nibs**  
25-30%



**Moringa Seed**  
30-32%



**Neem Seed 15-18%**  
**Neem Kernel 35-40%**



Steam Boiler



Layout Plan for 1 TPD and 3 TPD Oil Extraction Plant  
Land Requirement (Shed)  
About 300 sq.ft.: 15'x20' (5 Mtr. x 6 Mtr.)

## Oil Mill Process Equipments



Bevel Gears



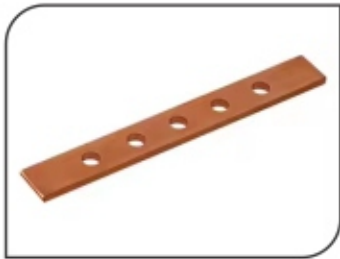
Gear Pinion



Driving Side Shafts



Crown Gear Set



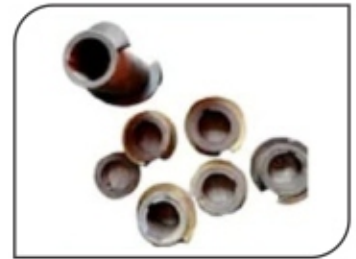
Frame Bar



Cone Bush



Chamber 44x7



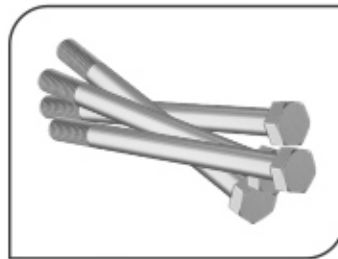
Worm Assembly



Spacing Collars



Bevel Pinion



Chamber Tie Rods



Cone Rings

## Material Handling Equipments



SCREW CONVEYOR



BUCKET ELEVATOR



PIPE SCREW CONVEYOR



# Oil Expellers / Oil Presses



**RIYANSH  
INTERNATIONAL**

♦ EXTRACTION ♦ REFINING ♦ RECYCLING

## MODEL: RIYANSH MK-3

### Features:

- ♦ Cast Iron Body and Steel Fabricated Base.
- ♦ Double Reduction Gear Box of Cast Iron Body with Steel Spur Gears.
- ♦ Steel Fabricated Chamber with Three Sections.
- ♦ Chambers are Vertically Filtered.
- ♦ Chamber is Made from Mild Steel Plates.
- ♦ Hardened Steel Main Worm Assembly and Cone Point.
- ♦ Round Heating Kettle Driven by Chain.
- ♦ Three Steam Jackets Kettle.
- ♦ High Yield of Oil and Cake.
- ♦ Superior Quality of Oil & Cakes.
- ♦ Low Maintenance.



### Specifications :

MODEL	EXPELLER MOTOR	CAPACITY	CHAMBER SIZE	LENGTH	BREADTH	HEIGHT	WEIGHT
RIYANSH MK-3	30 H.P., 1440 RPM	8 – 10 TPD*	Ø6" × 33" Long	2600 MM (8'6")	1250 MM (4'1")	2650 MM (8'8")	4000 Kgs Approx

## MODEL: RIYANSH MK-5C



### Features:

- ♦ Cast Iron Body and Steel Fabricated Base.
- ♦ Double Reduction Gear Box of Cast Iron Body with Mild Steel Fabricated Gears.
- ♦ Steel Fabricated Chamber with Four Sections.
- ♦ Chambers are Horizontally Fitted.
- ♦ Chamber is made from Mild Steel Plates.
- ♦ Case Hardened Worm Assembly and Cone Point.
- ♦ Main Worm Shaft can be withdrawn without Disturbing the Gear Box.
- ♦ Kettle : 3 or 4 Stages with Steam Jackets of Ø48" for efficient cooking of Seed.
- ♦ This Oil Expeller also comes with Vertical Round Kettle / Cooker
- ♦ Pipe Fitting contains all the required accessories.
- ♦ Superior quality of Oil & Cakes.
- ♦ Low Maintenance.

### Specifications :

MODEL	EXPELLER MOTOR	CAPACITY	CHAMBER SIZE	LENGTH	BREADTH	HEIGHT	WEIGHT
RIYANSH MK-5C	50 H.P., 960 RPM	18 – 20 TPD*	Ø7" × 44" Long	3550 MM (11'8")	1300 MM (4'3")	3600 MM (11'10")	4400 Kgs

## MODEL: VCO PRESS

### Features:

- ♦ The whole body is fabricated from stainless steel material.
- ♦ Chamber of SS Casting.
- ♦ The Screw Press is directly coupled with Geared Motor.
- ♦ Cake thickness can be adjusted on the running machine.
- ♦ Best Quality of Oil and Cake.
- ♦ Low maintenance required.
- ♦ Less space requirement.
- ♦ SS worm assembly

This Oil Press is also suitable for cold pressing of oil seeds and nuts like Groundnut, Sesame, Mustard / Canola / Rape Seed, Sunflower, Cumin seed etc.



MODEL	EXPELLER MOTOR	CAPACITY	CHAMBER SIZE	LENGTH	BREADTH	HEIGHT	WEIGHT
VCO PRESS	7.5 H.P., 1440 RPM	60 – 70 KG/H*	Ø4" × 26" Long	1580 MM (5'2")	460 MM (1'6")	1300 MM (4'3")	730 Kgs Approx

# Oil Filtration Equipment



**RIYANSH  
INTERNATIONAL**

♦ EXTRACTION ♦ REFINING ♦ RECYCLING

## Specifications :

PLATE TYPE FILTER PRESSES						
Size	Weight of Filter Press (Kgs.)	Filtration Area (Sq. Mtrs.)	Capacity (Liters / Day)	H.P.	No. of Pistons	Size of Plunger Pump
36" x 36" x 36 Plates	8000	30	40,000	7.5	Double	60 mm
30" x 30" x 30 Plates	5500	18	25,000	7.5	Single	80 mm
24" x 24" x 30 Plates	3000	11	12,500	5	Single	60 mm
24" x 24" x 24 Plates	2500	9	10,000	3	Single	60 mm
18" x 18" x 18 Plates	1100	4	5,000	2	Single	40 mm
14" x 14" x 14 Plates	650	2	3,500	1	Single	30 mm
12" x 12" x 12 Plates	380	1.5	2,500	1	Single	30 mm
FRAME TYPE FILTER PRESSES						
36" x 36" x 36 Plates x 35 Frames	9600	30	48,000	10	-	PCH Pump
30" x 30" x 30 Plates x 29 Frames	5400	18	30,000	7.5	-	PCH Pump
24" x 24" x 24 Plates x 23 Frames	2950	10	12,500	5	-	PCH Pump

## VERTICAL PRESSURE LEAF FILTER PRESS

Available from 20m<sup>2</sup> to 150 m<sup>2</sup>



## PP FILTER PRESS

### Features:

- ♦ Filter plates are made of reinforced polypropylene with high strength, light weight, corrosion resistance and non toxic.
- ♦ Heavy duty hydraulic cylinder for opening and closing of press.
- ♦ Ability to quickly change the filter cloths.
- ♦ High cake formation.



## FILTER PRESS (PLATE & FRAME TYPE)

### Features:

- ♦ Plates of the filter press are tested for casting defects before machining.
- ♦ Grinding process is done on the faces of filter plates to avoid leakage at high pressure.
- ♦ Flat bars provided at the sides are designed to stand extra pressure.
- ♦ Accessories provided with filter press are petcocks, oil through, one rod and a spanner (for filter cloth nuts).
- ♦ Plunger pump is supplied along with safety valve, air vessel, pressure gauge, pulley, belts & motor (optional).



Polish Filter







# RIYANSH INTERNATIONAL

EXTRACTION    REFINING    RECYCLING

(A GOVERNMENT OF INDIA RECOGNIZED STAR EXPORT HOUSE)



Sector-55, Ballabgarh, Faridabad-121004 (Haryana) INDIA

Contact : +91-96255 21007, E-mail: [info@riyanshinternationalagro.com](mailto:info@riyanshinternationalagro.com)

Website: [www.riyanshinternationalagro.com](http://www.riyanshinternationalagro.com)